



Humans, Humanoids, A.I.'s and Drones:

Brad Lansky - Explorer - by Dieter Zimmermann

Alex John - Brad's friend and co-pilot - by Matthew Roberts

Kimberly - Woman from 4D-verse - by Lynita Crofford

Aleph One - (A.I.) - Sol Ambassador - by Bianca Resnekov

MAMAI Soliton - (Antimatter A.I.) - by Guy McDonald

D5 - Being from 5D-verse - by Shannyn Fourie

Ziggurite Warlord - Crime boss from 4D-verse - by Louw Venter

GAIA: General Artificial Intelligence Assembly -
The Collective of all Sol System A.I.'s

Ships:

Full Advantage - Brad's exploration vessel - by Jennifer Beattie

Solefuge - Sol System warship - by Nigel Vermaas

Grefim - Electro-organic alien- by Caroline Calburn



A protophonic production

Written by J.D. Venne.

Directed by Caroline Calburn.

Music by COSMIC DIAL TONE. (Thanks to Speedy J for the use of his presets on NI Metaphysical.)

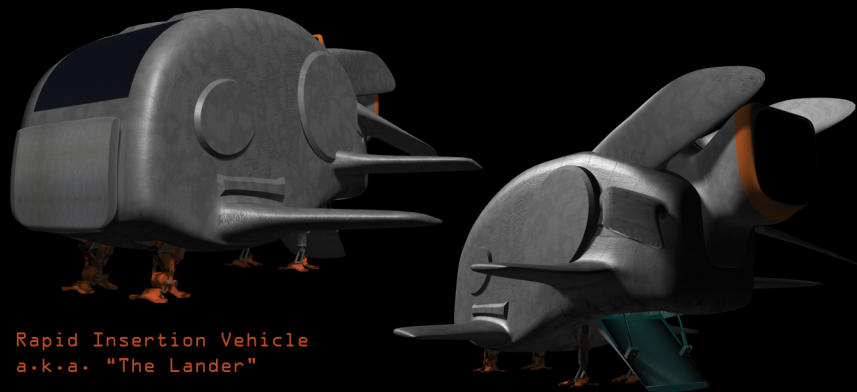
Mixed by protophonic.

Mastered by David Maclean, David Maclean Mastering, Cape Town

Artwork by Liz Clarke (www.lizclarke.co.za), Paul Darne and Jennifer Beattie.

Please send mail to info@protophonic.net

Visit Brad Lansky's world at www.protophonic.net



Rapid Insertion Vehicle
a.k.a. "The Lander"

Don't miss the previous adventures in the Brad Lansky series:
'The Anti-Starc', 'The Face of Eternal Fire', 'The Alien Engineer'
and 'The Alien at Planet X'.